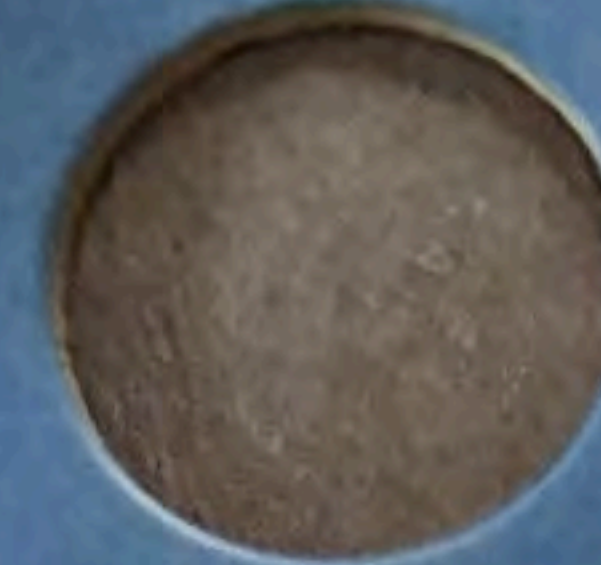




1948
3 MILLION



1948-D
4 MILLION



1949
5.7 MILLION



1949-D
4.1 MILLION



1949-S
3.7 MILLION



1950
7.8 MILLION



1950-D
8 MILLION



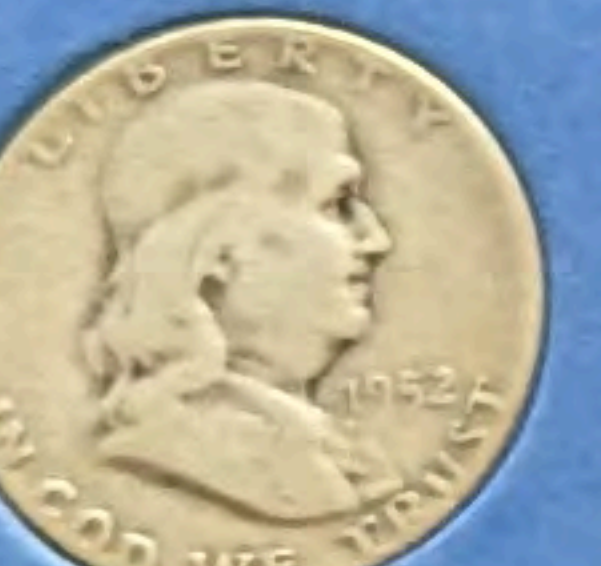
1951
16.9 MILLION



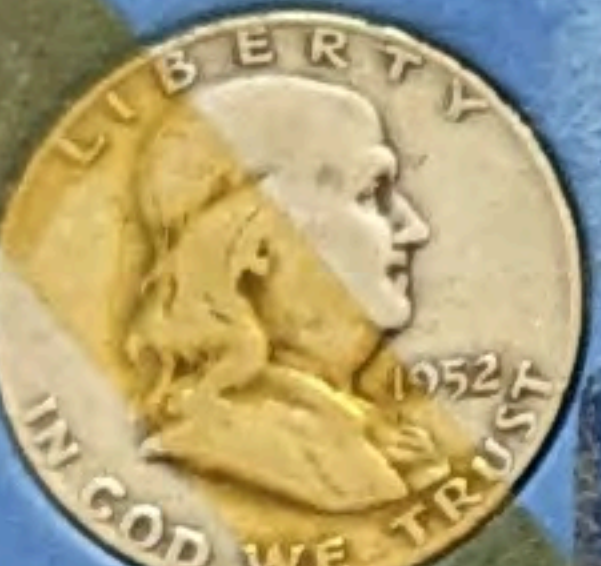
1951-D
9.5 MILLION



1951-S
13.7 MILLION



1952
21.3 MILLION

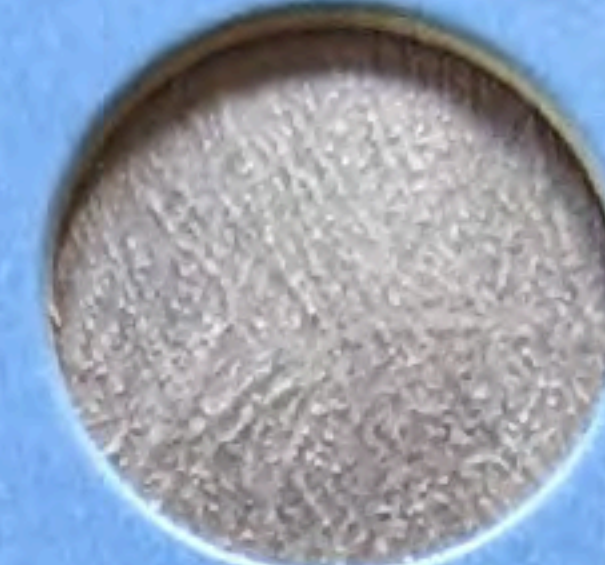


1952-L
25.4 MILLION

No. 9032



1952-S
5.5 MILLION



1953
2.8 MILLION



1953-D
20.9 MILLION



1953-S
4.1 MILLION



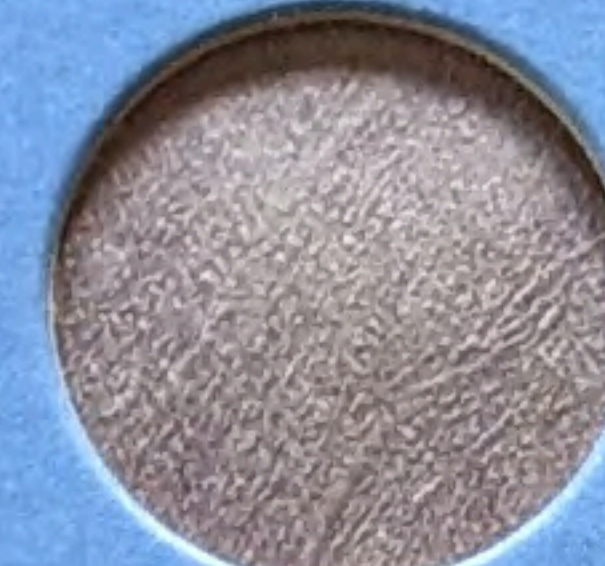
1954
13.4 MILLION



1954-D
25.4 MILLION



1954-S
5 MILLION



1955
2.9 MILLION



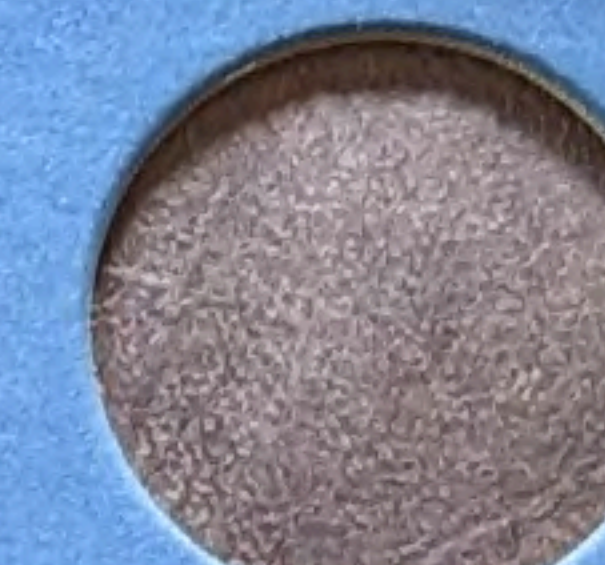
1956
4.7 MILLION



1957
6.3 MILLION



1957-D
19.9 MILLION



1958
4.9 MILLION



1958-D
24 MILLION



1959
7.3 MILLION



1959-D
13 MILLION



1960
7.7 MILLION



1960-D
18.2 MILLION



1961
11.3 MILLION



1961-D
20.3 MILLION



1962



1962-D



1963



1964



BENJAMIN
HALF DOLLAR
Star

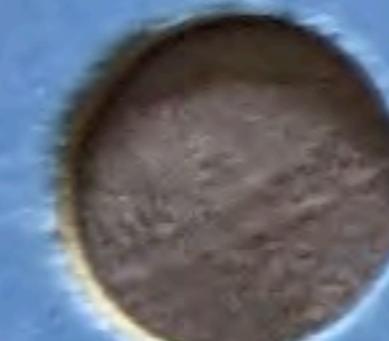
This type, announced in January, 1957, memorialize the philosopher and statesman of the time the United States was a nation.

Letters S and D are mint marks for San Francisco and Philadelphia.

WHITMAN PUBLISHING CO.
No. 9032



1916
22.2 MILLION



1916-D
264 THOUSAND



1916-S
10.5 MILLION



1917
55.2 MILLION



1917-D
9.4 MILLION



1917-S
27.3 MILLION



1918
26.7 MILLION



1918-D
22.7 MILLION



1918-S
19.2 MILLION



1919
35.7 MILLION



1918-D
9.9 MILLION



1919-S
8.9 MILLION



1920
59 MILLION



1920-D
19.2 MILLION



1920-S
13.8 MILLION



1921
1.2 MILLION



1921-D
1.1 MILLION



1923
50.1 MILLION



1923-S
6.4 MILLION



1924
24 MILLION



1924-D
6.8 MILLION



1924-S
7.1 MILLION



1925
25.6 MILLION



1925-D
5.1 MILLION



1925-S
5.9 MILLION

No. 9014



1926
32.2 MILLION



1926-D
6.8 MILLION



1926-S
1.5 MILLION



1927
28.1 MILLION



1927-D
4.8 MILLION



1927-S
4.8 MILLION



1928
19.5 MILLION



1928-D
4.2 MILLION



1928-S
7.4 MILLION



1929
26 MILLION



1929-D
5 MILLION



1929-S
4.7 MILLION



1930
6.8 MILLION



1930-S
1.8 MILLION



1931
3.2 MILLION



1931-D
1.3 MILLION



1931-S
1.8 MILLION



1934
24.1 MILLION



1934-D
6.8 MILLION



1935
58.8 MILLION



1935-D
10.5 MILLION



1935-S
15.8 MILLION



1936
87.5 MILLION



1936-D
16.1 MILLION



1936-S
9.2 MILLION



1937
56.9 MILLION



1937-D
14.1 MILLION



1937-S
9.7 MILLION



1938
22.2 MILLION



1938-D
5.5 MILLION



1938-S
8.1 MILLION



1939
67.8 MILLION



1939-D
24.4 MILLION



1939-S
10.5 MILLION



1940
65.4 MILLION



1940-D
21.2 MILLION



1940-S
21.6 MILLION



1941
175.1 MILLION



1941-D
45.6 MILLION



1941-S
43.1 MILLION



1942
205.4 MILLION



1942-D
60.7 MILLION



1942-S
49.3 MILLION



1943
191.7 MILLION



1943-D
71.9 MILLION



1943-S
60.4 MILLION



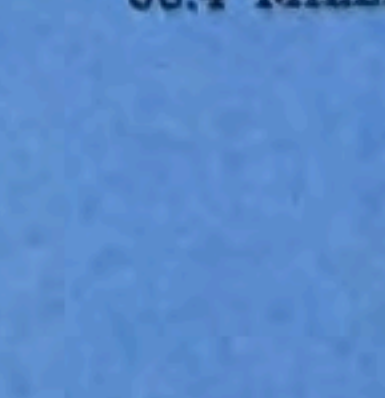
1944
231.4 MILLION



1944-D
62.2 MILLION



1944-S
49.5 MILLION



1945
159.1 MILLION



1945-D
40.2 MILLION



1945-S
41.9 MILLION

"MERCURY" HALF DOLLAR
1916 to 1945

A. A. Weinman designed the reverse of the dime. His monogram is on the right of the date.

Although the "Mercury" dime is a representation of the goddess of commerce, her cap, symbolizing wisdom.

Letters S and D are mint marks for San Francisco and Philadelphia. The mint mark on the reverse of the dime is opening is shown.

WHITMAN PUBLISHING CO.
No. 9014

1898-S	1.7 MILLION	1898	1.8 MILLION
1897	10.8 MILLION	1897-O	666 THOUSAND
1895-O	440 THOUSAND	1895-S	1.1 MILLION
1893-S	2.5 MILLION	1894	1.3 MILLION
1892	12.1 MILLION	1892-S	5907 THOUSAND
1890-O	2 MILLION	1891	1.3 MILLION
1889-S	1.9 MILLION	1890	1.8 MILLION
1888	16.3 MILLION	1890-O	575.1 THOUSAND
1887-S	2.7 MILLION	1891-S	2 MILLION
1886	1.3 MILLION	1892-O	610 THOUSAND
1885-O	2.1 MILLION	1893-S	613.3 THOUSAND
1884	1.2 MILLION	1894	14.6 MILLION
1883	1.3 MILLION	1895	800 THOUSAND
1882	1.3 MILLION	1896-S	14.6 MILLION
1881	1.3 MILLION	1897	22.2 MILLION
1880	1.3 MILLION	1897-O	4.1 MILLION
1879	1.3 MILLION	1898	5.1 MILLION
1878	1.3 MILLION	1898-O	2.2 MILLION
1877	1.3 MILLION	1899-S	4.1 MILLION
1876	1.3 MILLION	1900	17.6 MILLION

1946	255.3 MILLION	1946-D	27.9 MILLION
1947-D	46.8 MILLION	1946-S	61 MILLION
1947-S	34.8 MILLION	1947	121.5 MILLION
1948-D	75 MILLION	1948-S	35.5 MILLION
1948	46.8 MILLION	1948-D	52.8 MILLION
1949-D	26 MILLION	1948-S	30.8 MILLION
1949-S	13.5 MILLION	1949-D	20.4 MILLION
1951	103.9 MILLION	1950	50.2 MILLION
1951-D	31.6 MILLION	1950-S	20.4 MILLION
1951-S	52.2 MILLION	1951-D	52.2 MILLION
1952	44.4 MILLION	1952	99.1 MILLION
1952-S	44.4 MILLION	1953-D	186.4 MILLION
1953-D	114.2 MILLION	1953-S	32.2 MILLION
1954	114.2 MILLION	1953	53.6 MILLION
1955	121.1 MILLION	1954	53.6 MILLION

1908	10.8 MILLION	1908-S	3.1 MILLION
1907-S	3.2 MILLION	1906-O	2.6 MILLION
1907-O	5.1 MILLION	1906-D	4.1 MILLION
1907	4.1 MILLION	1906	20 MILLION
1906	22.2 MILLION	1905-S	6.9 MILLION
1905	5.1 MILLION	1905-O	613.3 THOUSAND
1904	14.6 MILLION	1904-S	800 THOUSAND
1903	14.6 MILLION	1904	14.6 MILLION
1902	21.4 MILLION	1902-O	4.5 MILLION
1902-S	2.1 MILLION	1902-S	2.1 MILLION
1901	18.9 MILLION	1901	5.2 MILLION
1901-O	5.6 MILLION	1900-S	2 MILLION
1901-S	593 THOUSAND	1900-O	2 MILLION
1900	10.8 MILLION	1900	2 MILLION

1955-D	14 MILLION	1955-S	18.5 MILLION
1955	12.8 MILLION	1955	12.8 MILLION
1956-D	108 MILLION	1956-D	108 MILLION
1956	109.3 MILLION	1956	109.3 MILLION
1957	181.4 MILLION	1957	181.4 MILLION
1957-D	113.8 MILLION	1957-D	113.8 MILLION
1958	32.7 MILLION	1958	32.7 MILLION
1959	86.9 MILLION	1959	86.9 MILLION
1959-D	164.9 MILLION	1959-D	164.9 MILLION
1960	72 MILLION	1960	72 MILLION
1960-D	200.1 MILLION	1960-D	200.1 MILLION
1961	137 MILLION	1961	137 MILLION
1961-D	86.9 MILLION	1961-D	86.9 MILLION
1962	164.9 MILLION	1962	164.9 MILLION
1962-D	72 MILLION	1962-D	72 MILLION

1914-S	2.1 MILLION	1914-S	3.4 MILLION
1915	5.6 MILLION	1913	19.8 MILLION
1915-S	960 THOUSAND	1913-S	510 THOUSAND
1916	18.5 MILLION	1914	17.4 MILLION
1916-S	5.8 MILLION	1914-D	11.9 MILLION
1911	18.9 MILLION	1911-D	11.2 MILLION
1911-S	3.5 MILLION	1911-S	3.5 MILLION
1910	11.5 MILLION	1910	11.5 MILLION
1910-S	1.2 MILLION	1910-D	3.5 MILLION
1910-O	1.2 MILLION	1910-S	1.2 MILLION
1909-O	2.3 MILLION	1909-S	1 MILLION
1909-D	7.5 MILLION	1908-O	1.8 MILLION
1908-D	7.5 MILLION	1908-S	3.2 MILLION
1908	10.2 MILLION	1909	10.2 MILLION
1909-D	954 THOUSAND	1909-D	954 THOUSAND

1971	1971	1971	1971	1971	1971
1972	1972	1972	1972	1972	1972
1973	1973	1973	1973	1973	1973
1974	1974	1974	1974	1974	1974
1975	1975	1975	1975	1975	1975
1976	1976	1976	1976	1976	1976
1977	1977	1977	1977	1977	1977
1978	1978	1978	1978	1978	1978
1979	1979	1979	1979	1979	1979
1980	1980	1980	1980	1980	1980
1981	1981	1981	1981	1981	1981
1982	1982	1982	1982	1982	1982
1983	1983	1983	1983	1983	1983
1984	1984	1984	1984	1984	1984
1985	1985	1985	1985	1985	1985
1986	1986	1986	1986	1986	1986
1987	1987	1987	1987	1987	1987
1988	1988	1988	1988	1988	1988
1989	1989	1989	1989	1989	1989
1990	1990	1990	1990	1990	1990
1991	1991	1991	1991	1991	1991
1992	1992	1992	1992	1992	1992
1993	1993	1993	1993	1993	1993
1994	1994	1994	1994	1994	1994
1995	1995	1995	1995	1995	1995
1996	1996	1996	1996	1996	1996
1997	1997	1997	1997	1997	1997
1998	1998	1998	1998	1998	1998
1999	1999	1999	1999	1999	1999
2000	2000	2000	2000	2000	2000

WHITMAN PUBLIS
No. 9013:35
Chart
initial
Libert
the "A"
the do
by G.
Lett
San Fr
no le
appea
of the
the qu

WHITMAN PUBL
No. 9029
The
of the
Roos
Le
at th
From
phia
quan



1906
3.7 MILLION

1906-D
3.3 MILLION

1906-O
2.1 MILLION



1907
7.2 MILLION

1907-D
2.5 MILLION

1907-O
4.6 MILLION



1907-S
1.4 MILLION

1908
4.2 MILLION

1908-D
5.8 MILLION



1908-O
6.2 MILLION



1908-S
784 THOUSAND

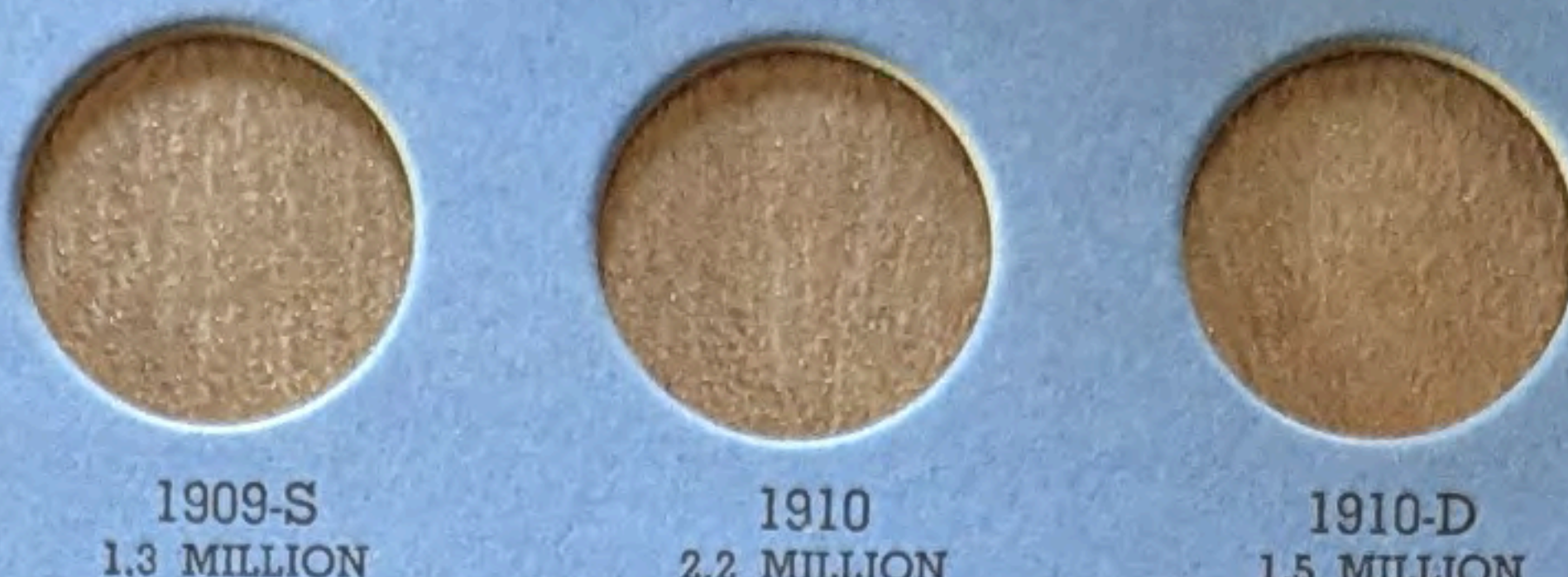
No. 9016



1909
9.3 MILLION

1909-D
5.1 MILLION

1909-O
712 THOUSAND



1909-S
1.3 MILLION

1910
2.2 MILLION

1910-D
1.5 MILLION



1911
3.7 MILLION

1911-D
933.6 THOUSAND



1911-S
988 THOUSAND



1912
4.4 MILLION



1912-S
708 THOUSAND



1913
484.6 THOUSAND

1913-D
1.5 MILLION

1913-S
40 THOUSAND



1914
6.2 MILLION

1914-D
3 MILLION

1914-S
264 THOUSAND



1915
3.5 MILLION

1915-D
3.7 MILLION

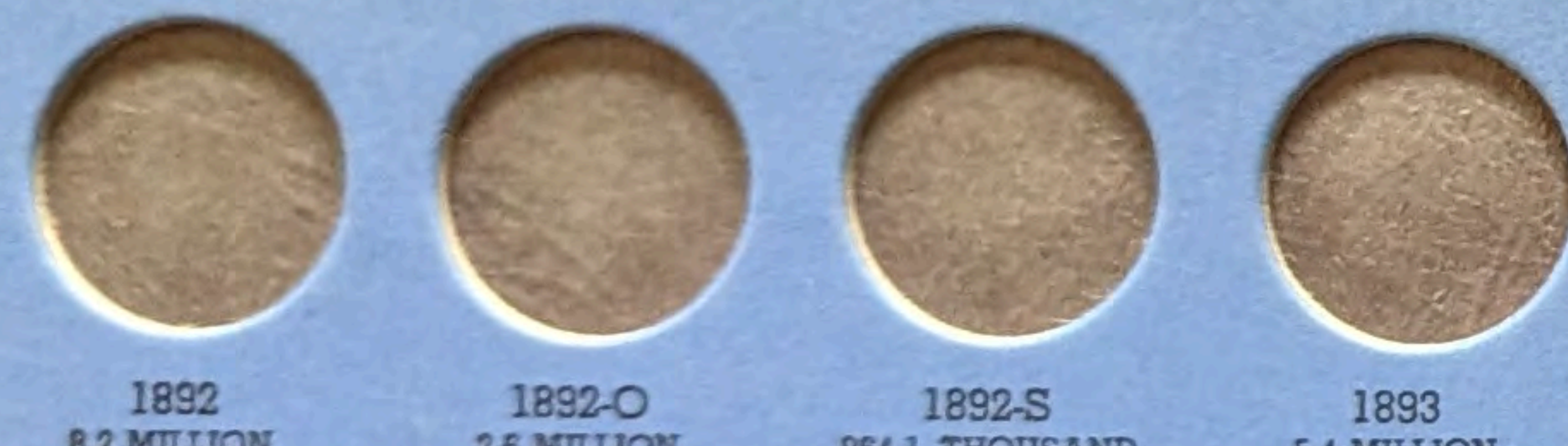
1915-S
704 THOUSAND



1916
1.8 MILLION



1916-D
6.5 MILLION



1892
8.2 MILLION

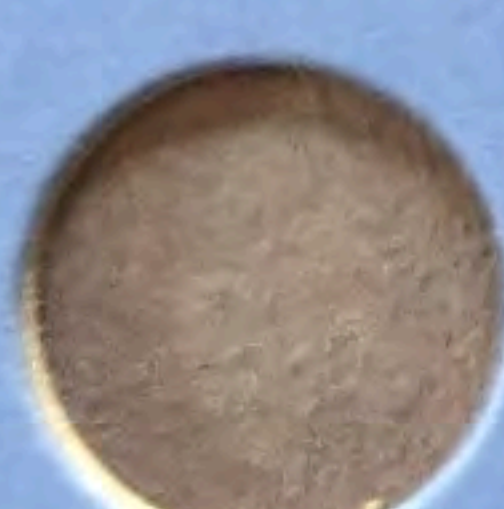
1892-O
2.6 MILLION

1892-S
964.1 THOUSAND

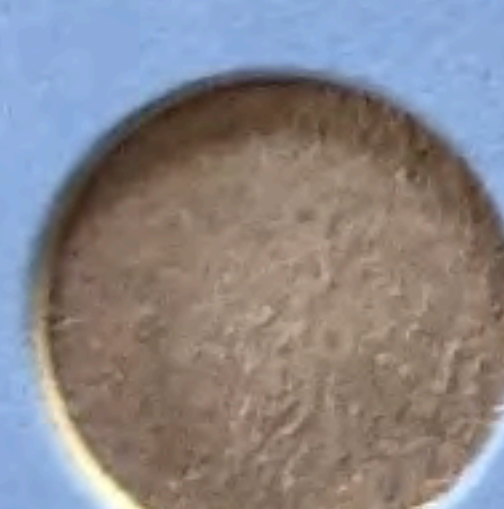
1893
5.4 MILLION



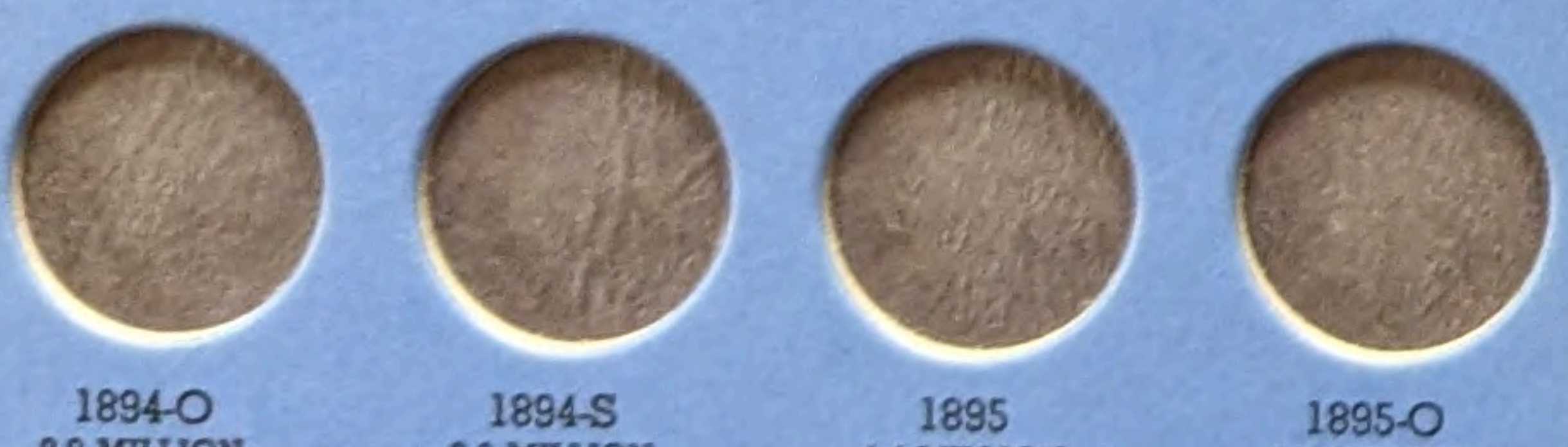
1893-O
3.4 MILLION



1893-S
1.5 MILLION



1894
3.4 MILLION



1894-O
2.9 MILLION

1894-S
2.6 MILLION

1895
4.4 MILLION

1895-O
2.8 MILLION



1895-S
1.8 MILLION



1896
3.9 MILLION



1896-O
1.5 MILLION

No. 9015



1896-S
188 THOUSAND



1897
8.1 MILLION

1897-O
1.4 MILLION

1897-S
542.2 THOUSAND



1898
11.1 MILLION



1898-O
1.9 MILLION



1898-S
1 MILLION



1899
12.6 MILLION



1899-O
2.6 MILLION



1899-S
708 THOUSAND



1900
10 MILLION



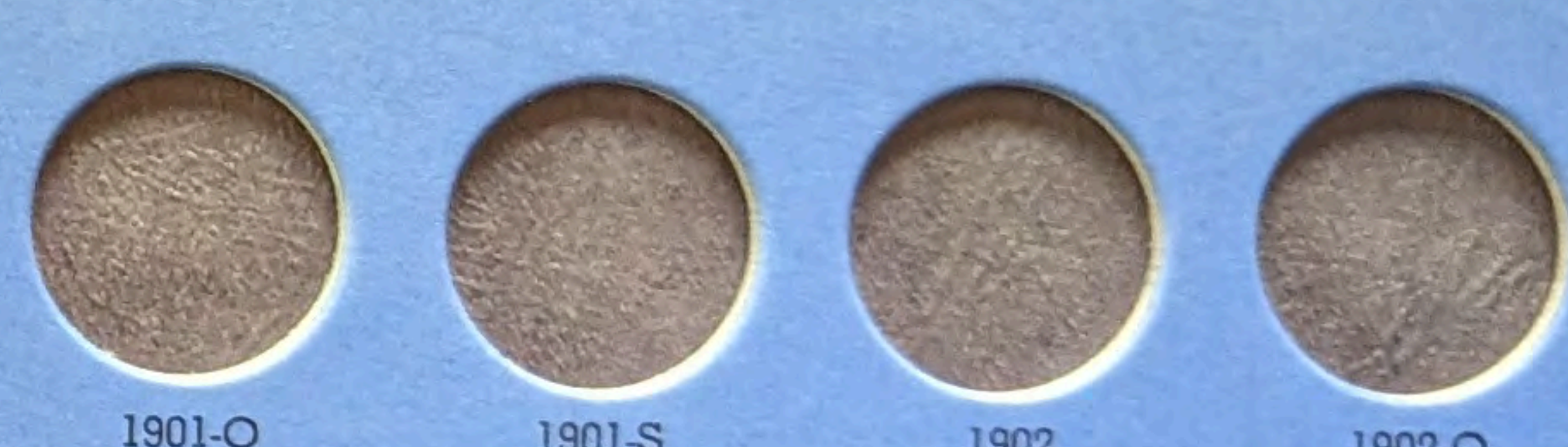
1900-O
3.4 MILLION



1900-S
1.9 MILLION



1901
8.9 MILLION



1901-O
1.6 MILLION

1901-S
72.7 THOUSAND

1902
12.2 MILLION

1902-O
4.7 MILLION



1902-S
1.5 MILLION



1903
9.7 MILLION



1903-O
3.5 MILLION



1903-S
1 MILLION



1904
9.8 MILLION



1904-O
2.5 MILLION



1905
5 MILLION



1905-O
1.2 MILLION



1905-S
1.9 MILLION

BARBER, J.

This quarter
"gan type"
designed a
However, J
quarter an
truncation a

Let
New Orlea
ver; no lette
appears at
Below each
tity minted.

WHITMAN PUBLISHING
No. 9016



BARBER, LIB
QUA

189

This quarter
"gan type"
designed a
However, J
quarter an
truncation a

Letters O
New Orlea
ver; no lette
appears at
Below each
tity minted.

WHITMAN PUBLISHING
No. 9015

JEFFERSON NICKELS 1938-1945-D



1938



1938-D



1938-S



1939



1939-D



1939-S



1940



1940-D



1940-S



1941



1941-D



1941-S



1942



1942-D



1942 (Silver)



1942-S (Silver)



1943 (Silver)



1943-D (Silver)



1943-S (Silver)



1944 (Silver)



1944-D (Silver)



1944-S (Silver)



1945 (Silver)



1945-D (Silver)

JEFFERSON NICKELS 1954-1964



1954



1954-D



1954-S



1955



1955-D



1956



1956-D



1957



1957-D



1958



1958-D



1959



1959-D



1960



1960-D



1961



1961-D



1962



1962-D



1963



1963-D



1964



1964-D

The ho
Here a
the ho
(slant
The ho
The
folder
Cen
II fro
throu
Britis
Small



CANADIAN
SMALL CENTS
ELIZABETH II-1952-
OVERSE
1973
1974

Here
The ho
special
The ho
col
T
Sov
As
bec
ma
the
act
T
All
dia



CANADIAN
SMALL CENTS
GEORGE V-1910-1936
OVERSE
1920
1921
1922
1923
1924
1925
1926
1927
1928
1929
1930
1931
1932
1933
1934
1935
1936
1936 with Dot
RARE

ELIZABETH II-1952-

GEORGE VI-1936-1952

No. 9062

LINCOLN MEMORIAL CENT COLLECTION

Starting 1959

1968	1968-D	1968-S	1969	1969-D	1969-S
2,622.5 MILLION	2,799 MILLION	1,497.2 MILLION	2,189.1 MILLION	3,048.7 MILLION	4,002.8 MILLION
1964	1964-D	1965	1966	1967	1967
1,752.2 MILLION	2,799 MILLION	1,497.2 MILLION	2,189.1 MILLION	3,048.7 MILLION	4,002.8 MILLION
1961-D	1962	1962-D	1963	1963-D	1963-D
1,752.2 MILLION	609.2 MILLION	1,793.1 MILLION	757.2 MILLION	1,774 MILLION	1,774 MILLION
1959	1959-D	1960	1960-D	1961	1961
610.8 MILLION	1,279.7 MILLION	588 MILLION	1,580.9 MILLION	756.3 MILLION	756.3 MILLION
Reverse	Reverse	Reverse	Reverse	Reverse	Reverse

9000

1968-S	1970	1970-D	1970-S	1971	1971
247.3 MILLION	1,808.3 MILLION	2,091.4 MILLION	693.1 MILLION	1,919.5 MILLION	1,919.5 MILLION
1971-D	1971-S	1972	1972-D	1972-S	1972-S
2,911 MILLION	2,951 MILLION	2,833.3 MILLION	2,665.1 MILLION	300.2 MILLION	300.2 MILLION
1973	1973-D	1973-S	1974	1974-D	1974-D
2,728.2 MILLION	3,549.6 MILLION	319.9 MILLION	319.9 MILLION	319.9 MILLION	319.9 MILLION
1974-S	1974-S	1974-S	1974-S	1974-S	1974-S

1975	1975-D	1975-S	1976	1976-D	1976-S
5.5 BILLION	4.5 BILLION	4.7 BILLION	4.2 BILLION	4.5 BILLION	4.5 BILLION
1977	1977-D	1977-S	1978	1978-D	1978-S
4.5 BILLION	4.5 BILLION	4.5 BILLION	4.3 BILLION	4.3 BILLION	4.3 BILLION
1979	1979-D	1979-S	1980	1980-D	1980-S
4.1 BILLION	4.1 BILLION	4.1 BILLION	5.8 BILLION	5.8 BILLION	5.8 BILLION
1981	1981-D	1981-S	1982	1982-D	1982-S
5.4 BILLION	5.4 BILLION	5.4 BILLION	5.1 BILLION	5.1 BILLION	5.1 BILLION
1983	1983-D	1983-S	1984	1984-D	1984-S
6.3 BILLION	6.3 BILLION	6.3 BILLION	6.2 BILLION	6.2 BILLION	6.2 BILLION
1985	1985-D	1985-S	1986	1986-D	1986-S
5.6 BILLION	5.6 BILLION	5.6 BILLION	4.7 BILLION	4.7 BILLION	4.7 BILLION

1987	1987-D	1987-S	1988	1988-D	1988-S
4.7 BILLION	4.7 BILLION	4.7 BILLION	4.9 BILLION	4.9 BILLION	4.9 BILLION
1989	1989-D	1989-S	1990	1990-D	1990-S
6.9 BILLION	6.9 BILLION	6.9 BILLION	6.9 BILLION	6.9 BILLION	6.9 BILLION
1991	1991-D	1991-S	1992	1992-D	1992-S
7.1 BILLION	7.1 BILLION	7.1 BILLION	7.1 BILLION	7.1 BILLION	7.1 BILLION
1993	1993-D	1993-S	1994	1994-D	1994-S
5.7 BILLION	5.7 BILLION	5.7 BILLION	6.4 BILLION	6.4 BILLION	6.4 BILLION
1995	1995-D	1995-S	1996	1996-D	1996-S
6.4 BILLION	6.4 BILLION	6.4 BILLION	6.8 BILLION	6.8 BILLION	6.8 BILLION
1997-D	1997-D	1997-S	1998	1998-D	1998-S
4.8 BILLION	4.8 BILLION	4.8 BILLION	5 BILLION	5 BILLION	5 BILLION
1999	1999-D	1999-S	2000	2000-D	2000-S
4.8 BILLION	4.8 BILLION	4.8 BILLION	4.8 BILLION	4.8 BILLION	4.8 BILLION

1999	1999-D	1999-S	2000	2000-D	2000-S
4.8 BILLION	4.8 BILLION	4.8 BILLION	4.8 BILLION	4.8 BILLION	4.8 BILLION
2001	2001-D	2001-S	2002	2002-D	2002-S
5.2 BILLION	5.2 BILLION	5.2 BILLION	5.2 BILLION	5.2 BILLION	5.2 BILLION

2002	2002-D	2002-S	2003	2003-D	2003-S
6.4 BILLION	6.4 BILLION	6.4 BILLION	6.4 BILLION	6.4 BILLION	6.4 BILLION

LINCOLN



The Lincoln cent is an individual. It was designed by Victor David in 1918 as a tribute to the 150th anniversary of the birth of Abraham Lincoln. The Lincoln cent is an individual. It was designed by Victor David in 1918 as a tribute to the 150th anniversary of the birth of Abraham Lincoln.

WHITMAN COIN PRESS
9000

To enjoy your hobby more, Whitman books available for all territorial issues. Fully illustrated price guide for nickel, silver, and gold coins. Buy and sell. 208 pages. Official A.N.A. Grading Standards from 1793 to date. 368 pages. Coins: Questions and Answers illustrated. 208 pages. Photographs, by James F. Hill, series of U.S. coins covered in terms of U.S. coins covered. United States and Canada convenient inventory of U.S. small size currency. Fully illustrated. The Whitman Guide to Coin